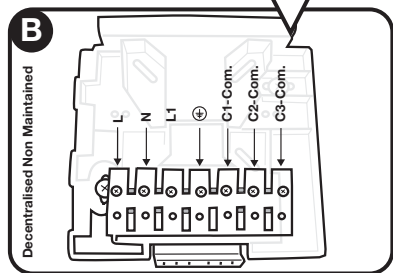
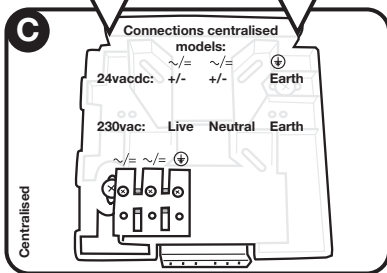
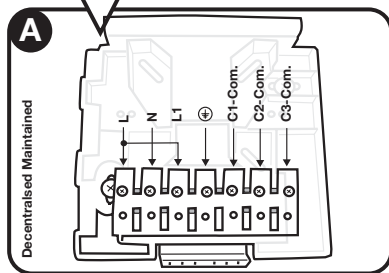
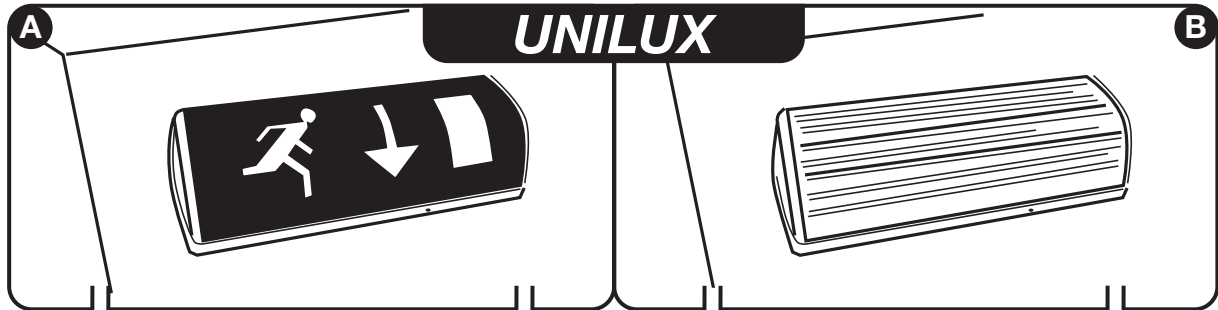
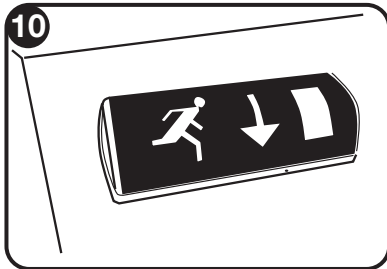
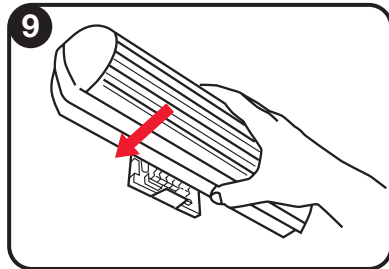
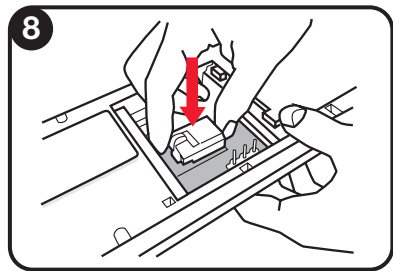
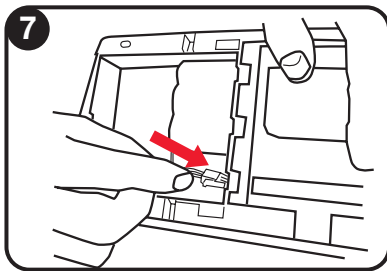
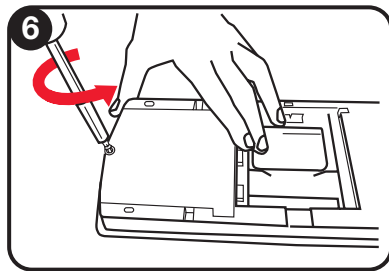
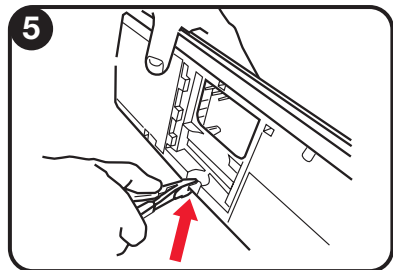
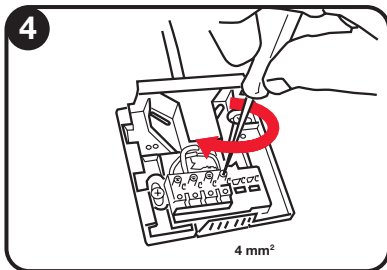
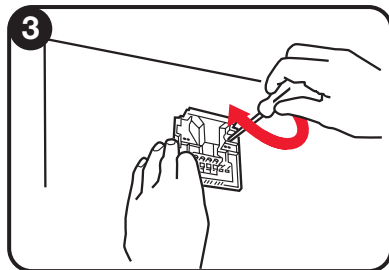
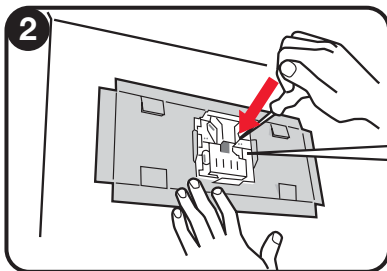
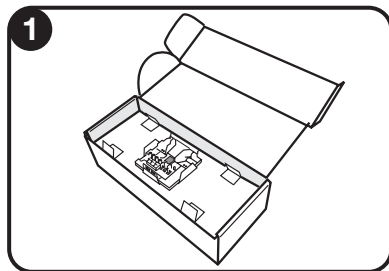




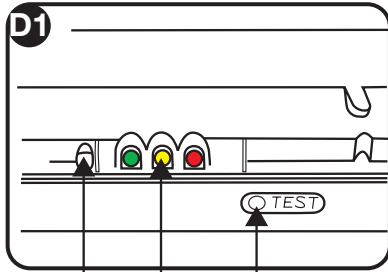
Fire & Safety



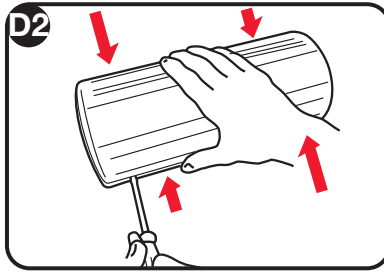
Note! For NM-functionality, remove strap between L-L1



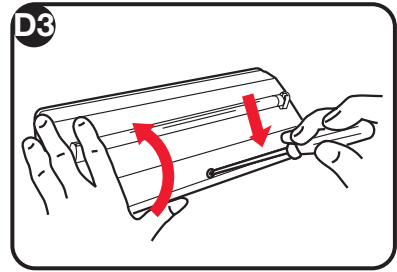
Communication module Optional, see table next page!



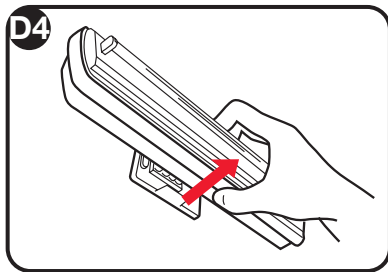
Release  
LED indicators  
Test



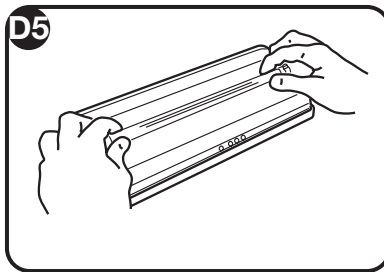
Remove lens



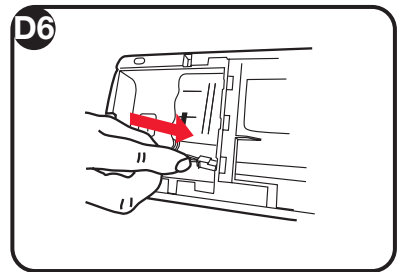
Release mounting bracket



Release from ceiling/wall



Change tube



Change battery  
Replacement of batteries is needed  
when the selfcontained luminaire  
no longer meets its rated duration  
of operation

Indicator LED's	Testbutton
        Reset	Press for:  Flashing green LED= Battery charge mode, no test possible from test button  1 - 5 seconds  5 - 10 seconds  Press and release after 10 sec.

### Communication Modules

(For Autotest only)  
Voltage free: 290100  
eIBus: 290101

See separate instruction leaflet.

### Emergency lumen output

Normal: 137 lm  
Emergency: 150 lm

Ambient temperature range: 0- +35degC (3hrs) 0- +30degC (1hr)  
For IP 20 installations only!  
Expected battery lifetime 4 years

Max. permitted spacing Installation height					
2,5	5,0	12,0	9,0	6,0	2,5
3,0	4,8	12,5	9,2	6,0	2,5
4,0	3,6	12,4	9,3	6,0	2,0

Max. Permitted spacing= min. 1lux on floor, 0 -reflection, maintenance factor= 0.8, corridor width= 3,6m, acc. to EN1838